

B6 | Piano Secondo |

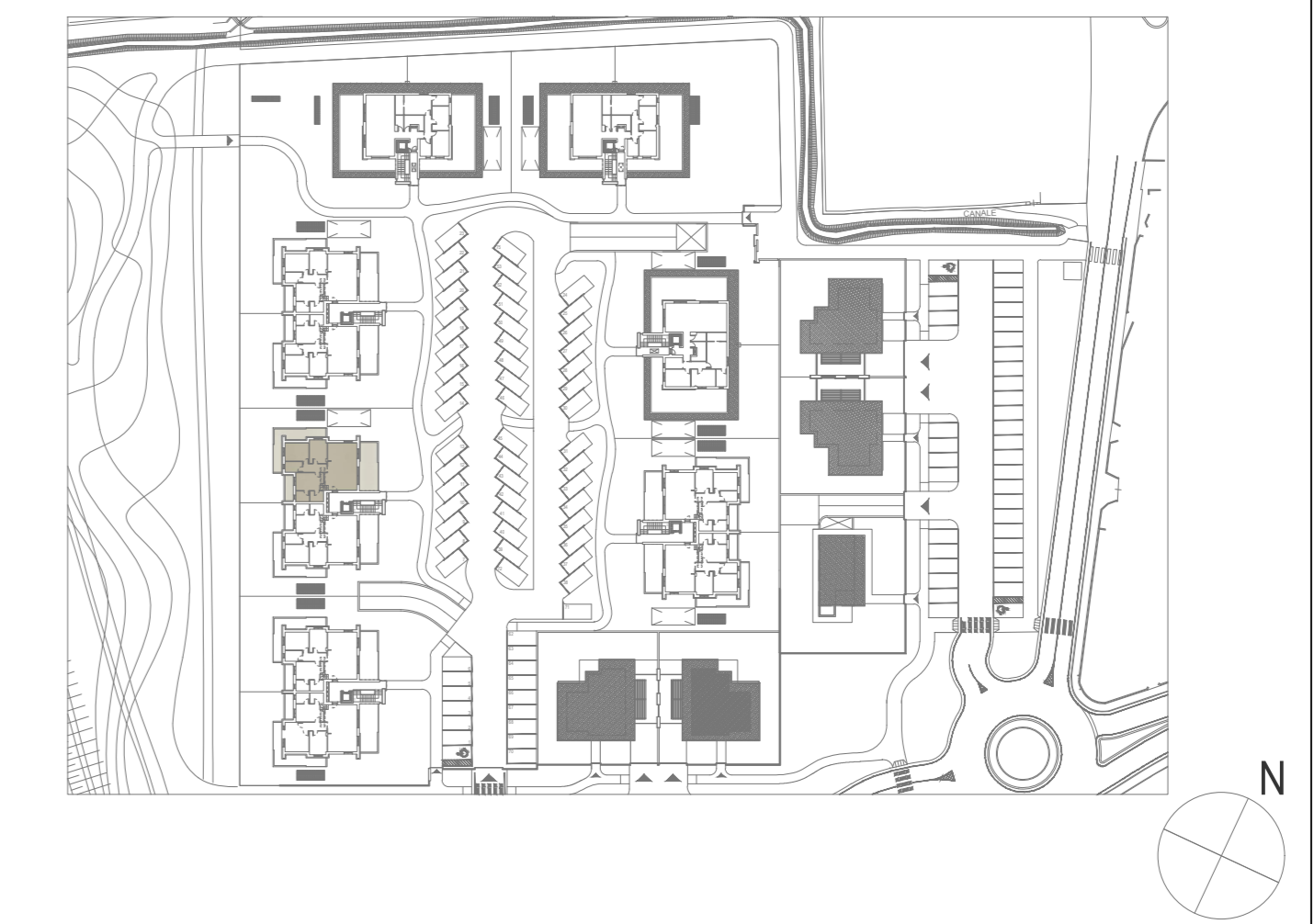
 177,50 mq

 2

 2



LOCALE	S.U. mq		
Soggiorno/cucina	41,77 mq	Cabina armadio	4,07 mq
Disimpegno	5,35 mq	Terrazzo 1	26,82 mq
Bagno 1	4,44 mq	Terrazzo 2	26,94 mq
Bagno 2	5,40 mq	Terrazzo 3	7,31 mq
Camera 1	14,29 mq	Terrazzo 4	31,44 mq
Camera 2	11,80 mq	Soppalco	46,90 mq
Camera 3	12,05 mq	Garage	32,07 mq



FABRICA

REAL ESTATE

RESIDENZA ALICE - TREVILO (BG)
APPARTAMENTO B6 | PIANO SECONDO | SCALA 1:50

