


# A1 | Piano Terra

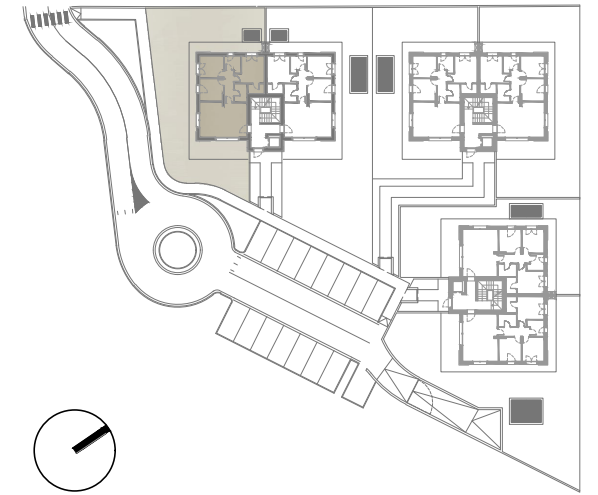
 129,88 mq

 2

 2



LOCALE	S.U. mq		
Soggiorno/cucina	29,28 mq	Camera 2	9,28 mq
Disimpegno	4,23 mq	Camera 3	9,42 mq
Bagno 1	4,26 mq	Pavimentazione	44,14 mq
Bagno 2	4,90 mq	Giardino	172,57 mq
Camera 1	15,26 mq	Garage	28,10 mq



# FABRICA

REAL ESTATE

RESIDENZA LAURA 4 - GORLE (BG)  
APPARTAMENTO A1 | PIANO TERRA | SCALA 1:50

