

A1 | Piano Terra

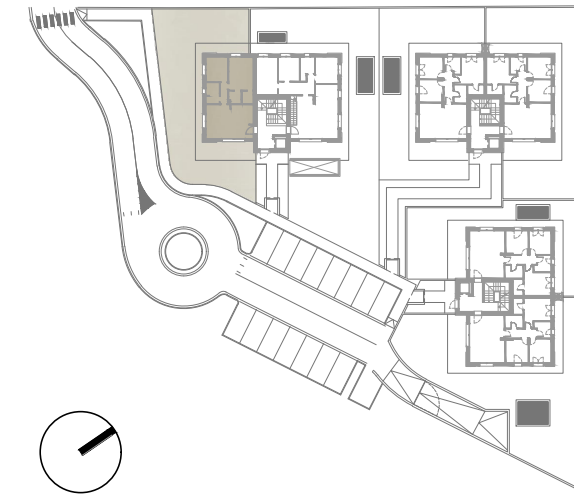
 115,08 mq

 2

 2



LOCALE	S.U. mq		
Soggiorno/cucina	28,46 mq	Camera 2	14,52 mq
Disimpegno	4,23 mq	Cabina armadio	2,55 mq
Bagno 1	5,04 mq	Pavimentazione	40,12 mq
Bagno 2	2,90 mq	Giardino	159,77 mq
Camera 1	9,60 mq	Garage	28,10 mq



FABRICA

REAL ESTATE

RESIDENZA LAURA 4 - GORLE (BG)
APPARTAMENTO A1 | PIANO TERRA | SCALA 1:50

