

# B4 |Piano Primo|



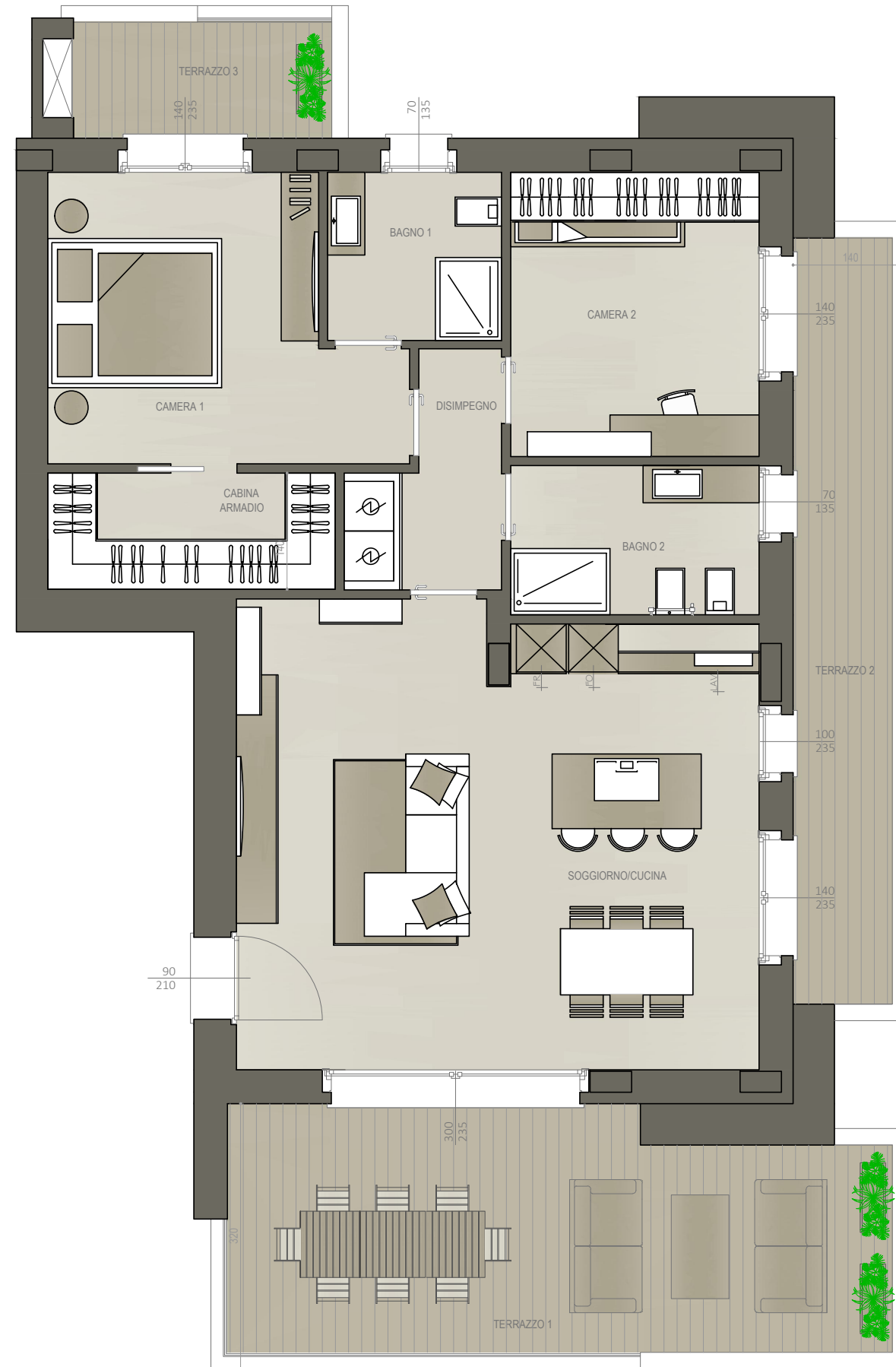
123,00 mq



2



2



LOCALE	S.U. mq	LOCALE	S.U. mq
Soggiorno/cucina	34,64 mq	Camera 2	10,30 mq
Disimpegno	4,18 mq	Terrazzo 1	25,26 mq
Bagno 1	4,26 mq	Terrazzo 2	13,08 mq
Bagno 2	5,40 mq	Terrazzo 3	5,55 mq
Camera 1	13,03 mq	Garage	27,88 mq
Cabina armadio	4,86 mq		

