


C2 | Piano Terra

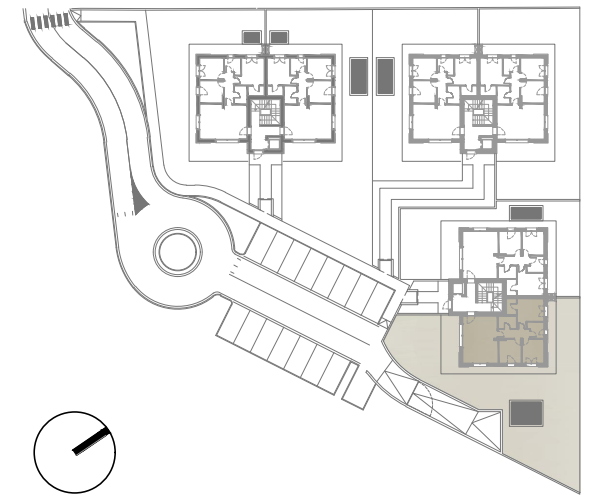
 137,28 mq

 2

 2



LOCALE	S.U. mq		
Soggiorno/cucina	29,28 mq	Camera 2	9,28 mq
Disimpegno	4,23 mq	Camera 3	9,42 mq
Bagno 1	4,26 mq	Pavimentazione	41,62 mq
Bagno 2	4,90 mq	Giardino	256,46 mq
Camera 1	15,26 mq	Garage	27,30 mq



FABRICA

REAL ESTATE

RESIDENZA LAURA 4 - GORLE (BG)
APPARTAMENTO C2 | PIANO TERRA | SCALA 1:50

