

B2 | Piano Terra

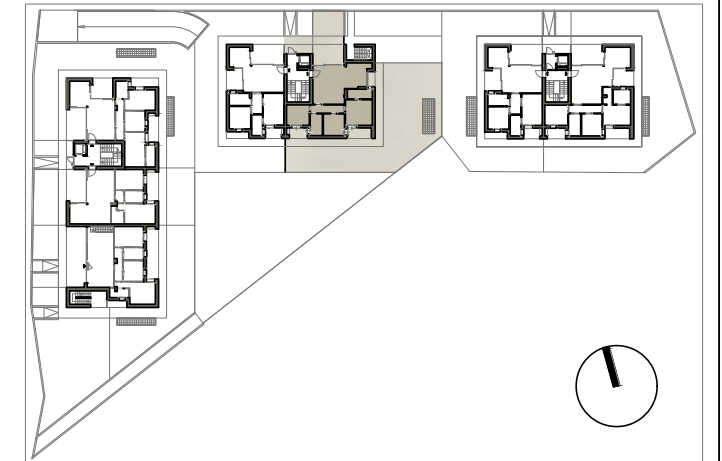
 157.40 mq

 2

 2



| LOCALE | S.U. mq | | |
|-------------|----------|----------------|-----------|
| Soggiorno | 26,84 mq | Loggia 1 | 13,66 mq |
| Cucina | 12,62 mq | Loggia 2 | 6,00 mq |
| Disimpegnio | 6,11 mq | Loggia 3 | 2,38 mq |
| Bagno 1 | 5,80 mq | Loggia 4 | 4,12 mq |
| Bagno 2 | 5,56 mq | Pavimentazione | 36,25 mq |
| Camera 1 | 14,95 mq | Giardino | 181,70 mq |
| Camera 2 | 10,14 mq | Garage | 30,60 mq |
| Camera 3 | 10,09 mq | Cantina | 3,13 mq |



F A B R I C A

LOTTO 3 - RESIDENZA PAOLA - STEZZANO (BG)
APPARTAMENTO B2 | PIANO TERRA | SCALA 1:50

