


B1 | Piano Terra

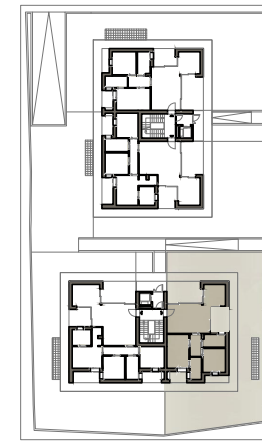
 137,59 mq

 2

 2



LOCALE	S.U. mq		
Soggiorno	23,86 mq	Loggia 1	13,81 mq
Cucina	9,24 mq	Loggia 2	8,23 mq
Disimpegnio	4,84 mq	Loggia 3	2,78 mq
Bagno 1	5,68 mq	Loggia 4	3,70 mq
Bagno 2	4,91 mq	Pavimentazione	40,29 mq
Camera 1	14,13 mq	Giardino	165,40 mq
Camera 2	10,27 mq	Garage	30,60 mq



FABRICA REAL ESTATE

LOTTO 1- RESIDENZA RAFFAELLA - STEZZANO (BG)
APPARTAMENTO B1 | PIANO TERRA | SCALA 1:50

