


A5 | Piano Secondo |

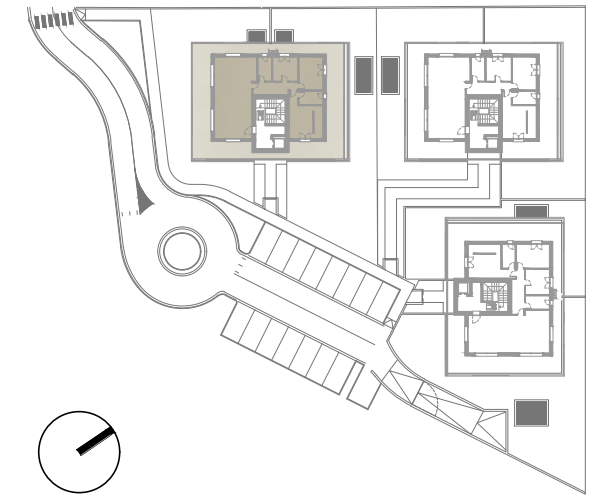
 211,58 mq

 2

 2



LOCALE	S.U. mq		
Soggiorno/cucina	56,13 mq	Camera 1	16,26 mq
Disimpegno	8,90 mq	Camera 2	14,01 mq
Bagno 1	5,70 mq	Camera 3	11,25 mq
Bagno 2	5,94 mq	Terrazzo 1	122,10 mq
Cabina armadio	5,23 mq	Garage	34,60 mq



FABRICA

REAL ESTATE

RESIDENZA LAURA 4 - GORLE (BG)
 APPARTAMENTO A5 | PIANO SECONDO | SCALA 1:50

