

H | Villa



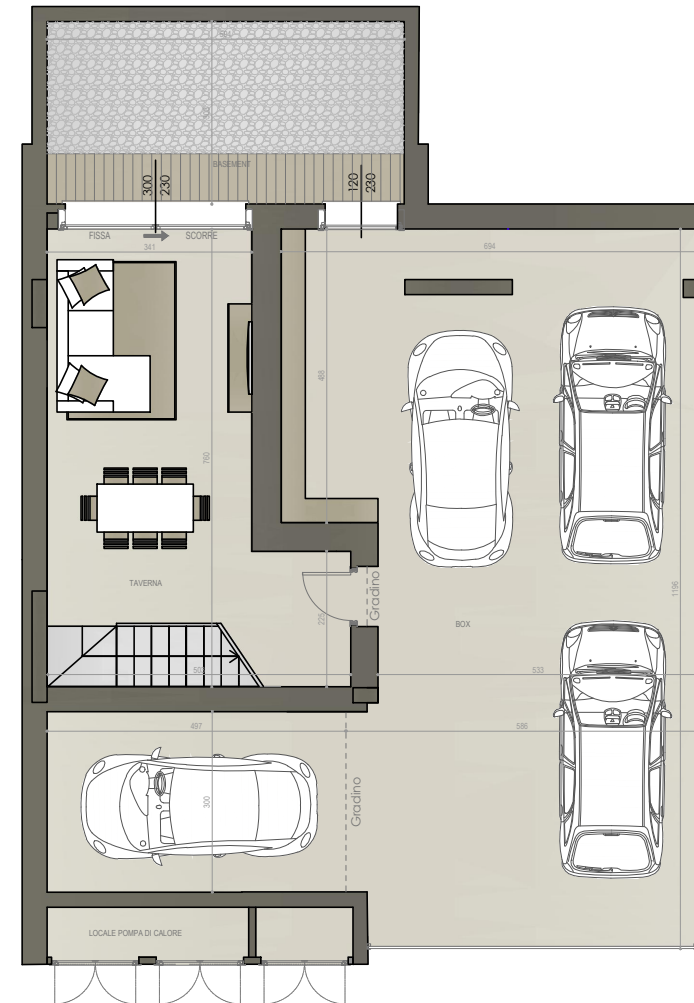
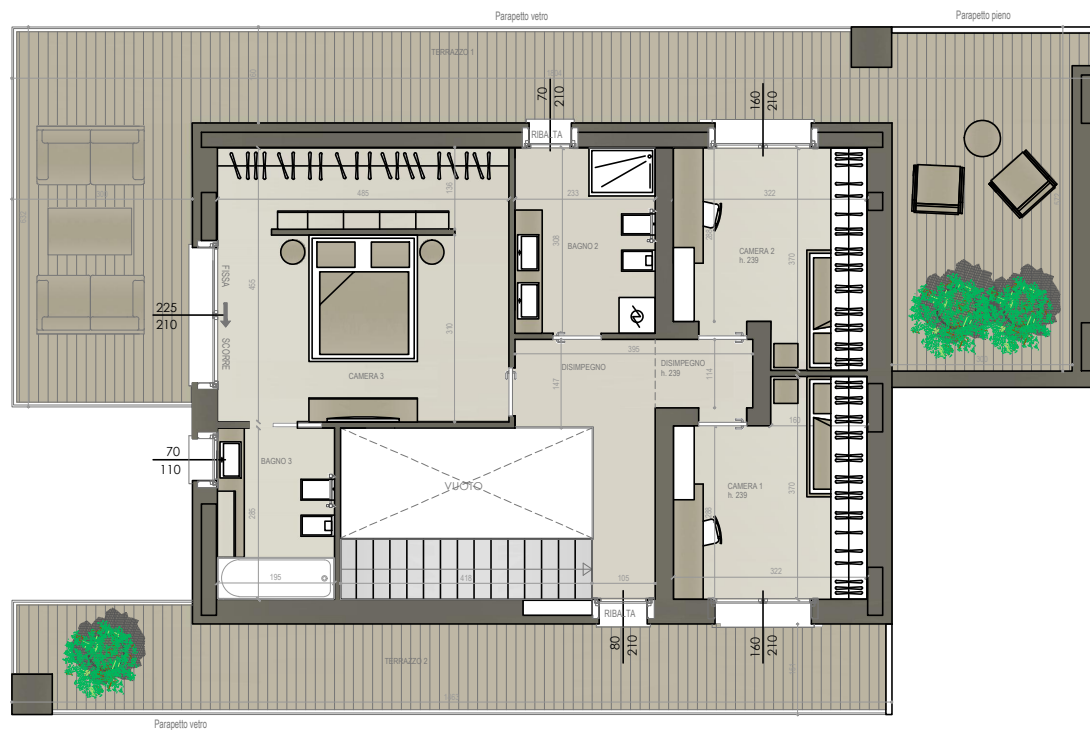
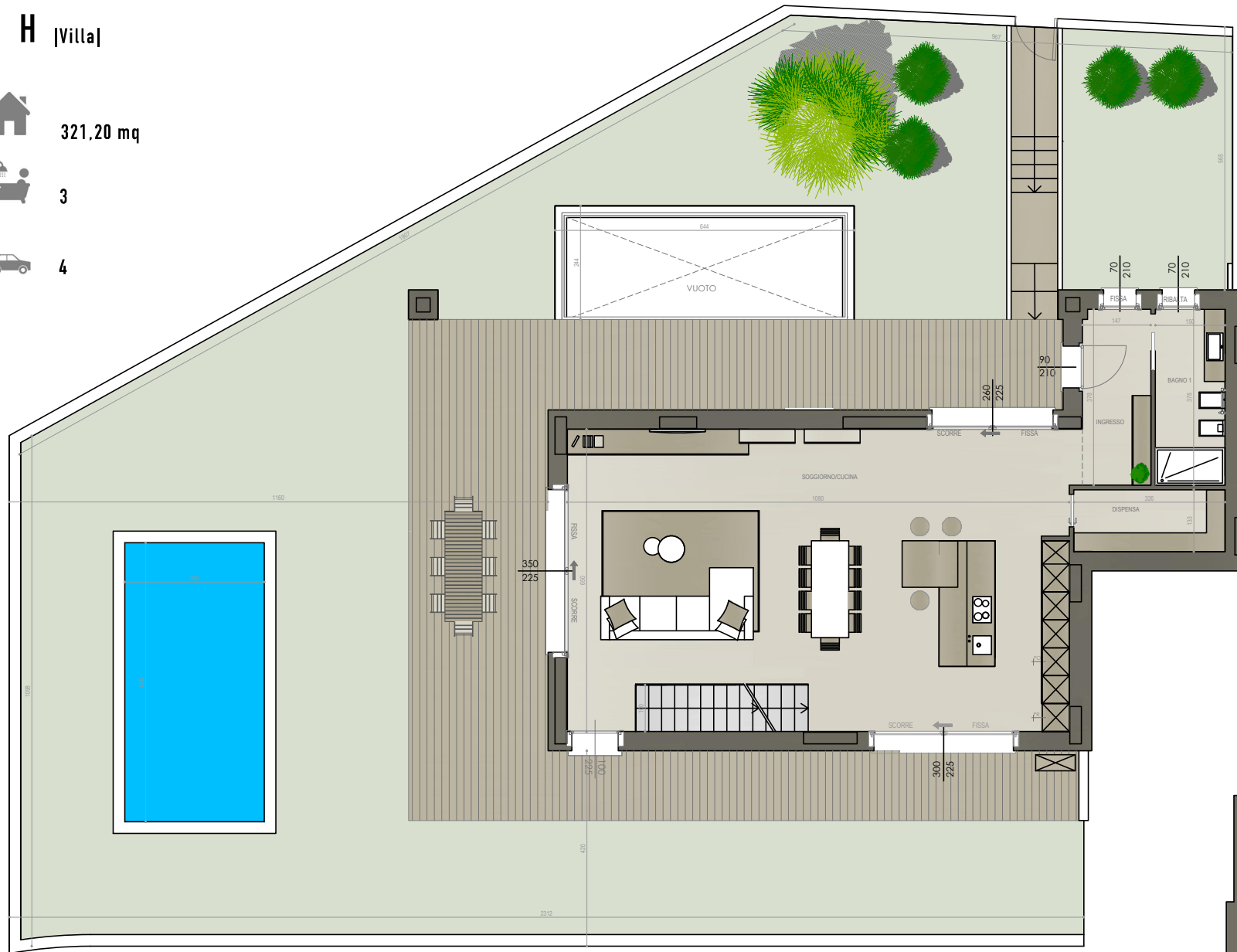
321.20 mq



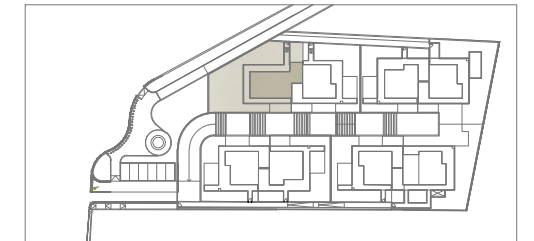
3



4



LOCALE	S.U. mq		
Ingresso	5,56 mq	Camera 3	22,07 mq
Soggiorno	70,54 mq	Terrazzo 1	54,43 mq
Bagno 1	5,67 mq	Terrazzo 2	22,75 mq
Dispensa	4,33 mq	Pavimentazione esterna	76,46 mq
Disimpegno	8,26 mq	Giardino	212,36 mq
Bagno 2	7,18 mq	Taverna	29,60 mq
Bagno 3	5,56 mq	Basement	18,00 mq
Camera 1	10,58 mq	Garage	87,98 mq
Camera 2	10,58 mq		



FABRICA

REAL ESTATE

RESIDENZA- CURNO (BG)
VILLA H | SCALA 1:50