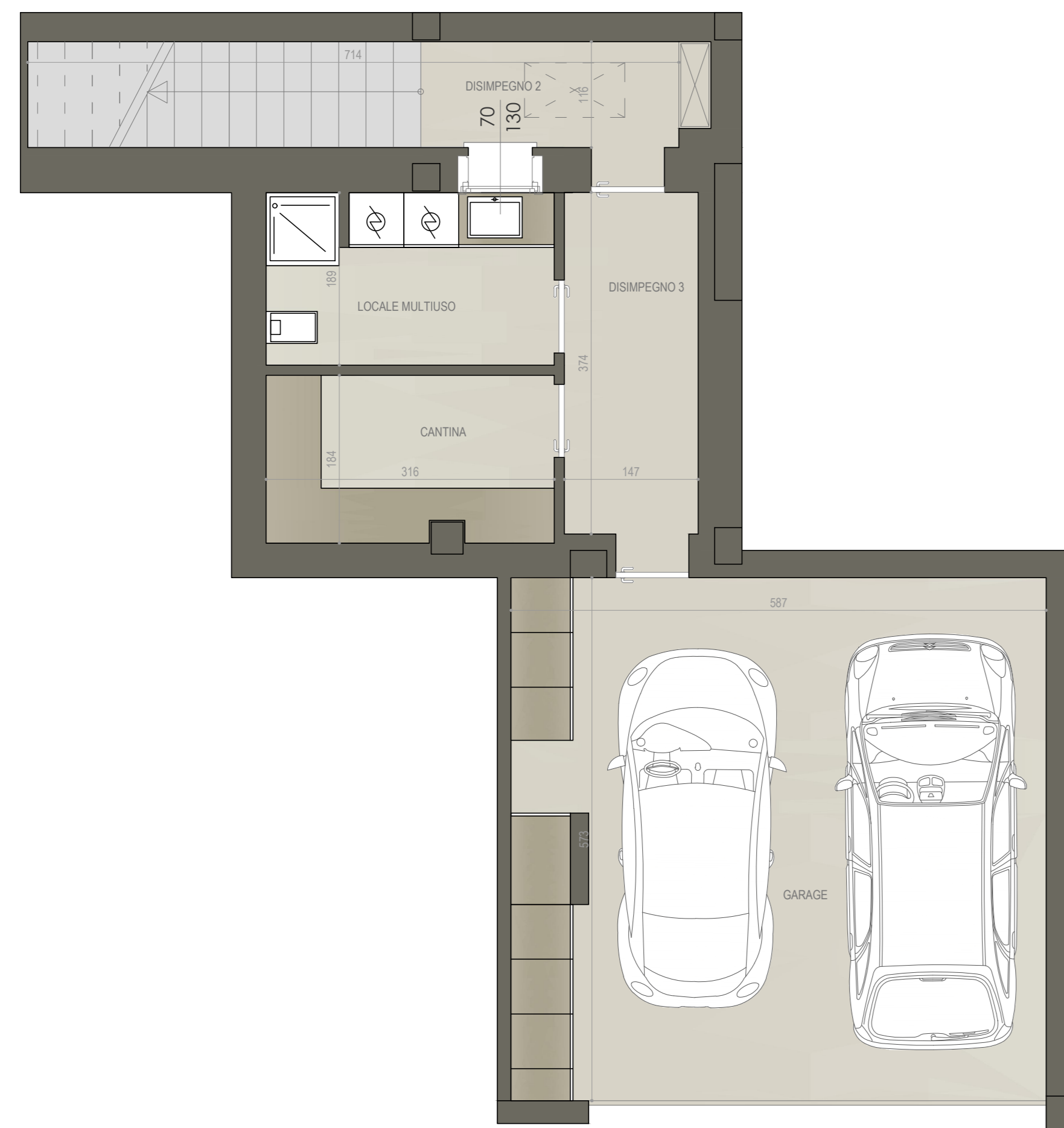


**B1** | Piano Terra

 **183,72 mq**

 **2**

 **2**

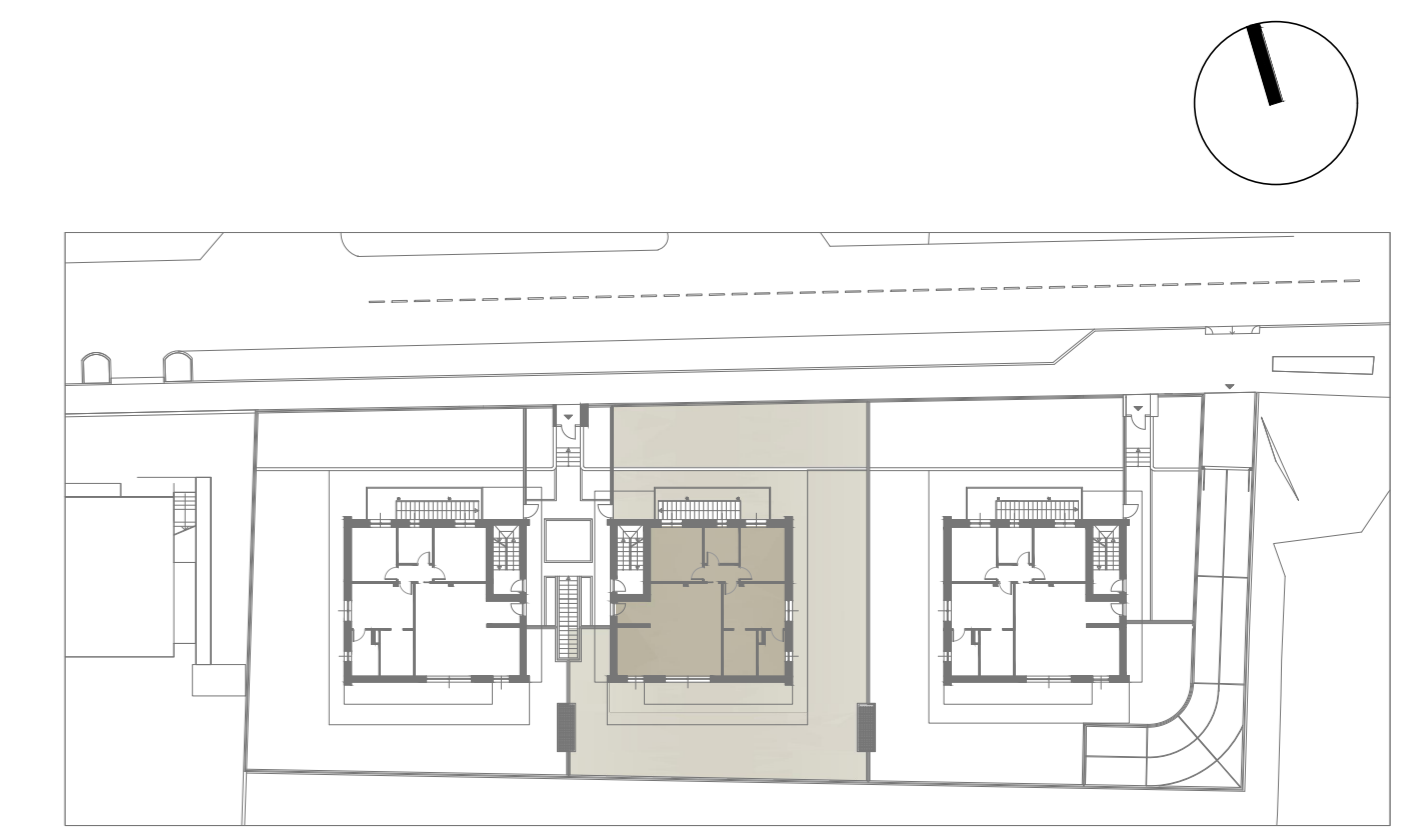


PIANO INTERRATO



PIANO TERRA

LOCALE	S.U. mq		
Ingresso	3,40 mq	Cabina armadio	4,83 mq
Soggiorno	28,00 mq	Pavimentazione	72,53 mq
Cucina	7,89 mq	Giardino	232,32 mq
Disimpegno 1	2,38 mq	Disimpegno 2	3,28 mq
Bagno 1	5,23 mq	Disimpegno 3	5,50 mq
Bagno 2	7,10 mq	Cantina	5,81 mq
Camera 1	11,97 mq	Locale multiuso	5,97 mq
Camera 2	10,95 mq	Garage	33,63 mq
Camera 3	12,50 mq		



**FABRICA**  
REAL ESTATE

RESIDENZA BARBARA - VIA PRESOLANA - BERGAMO (BG)  
APPARTAMENTO B1 | PIANO TERRA | SCALA 1:50

