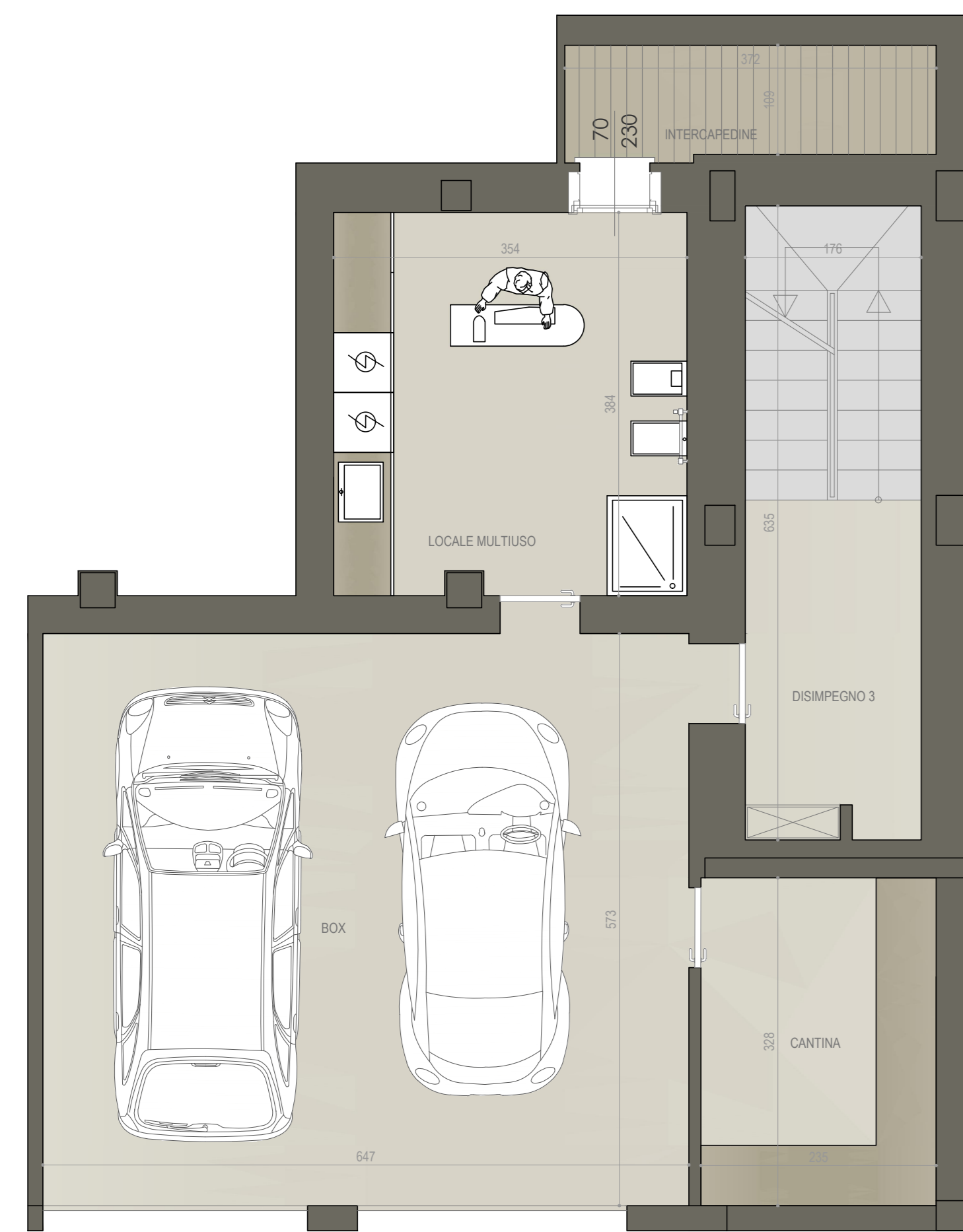


C2 | Piano Primo

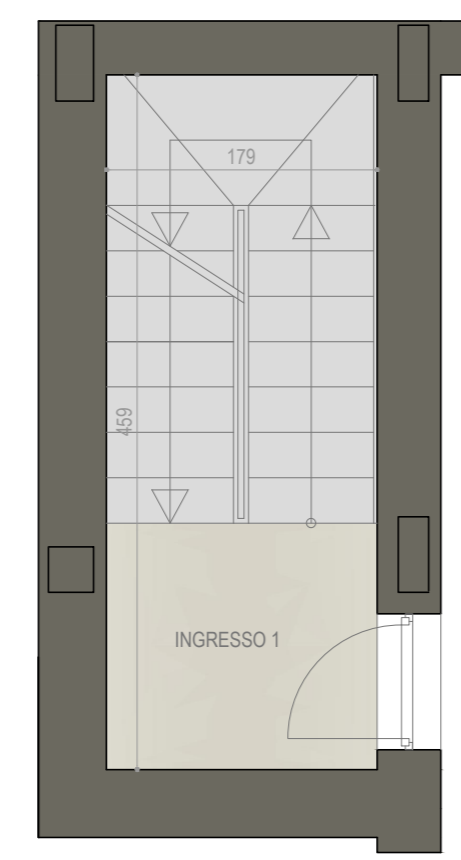
 218,15 mq

 2

 2



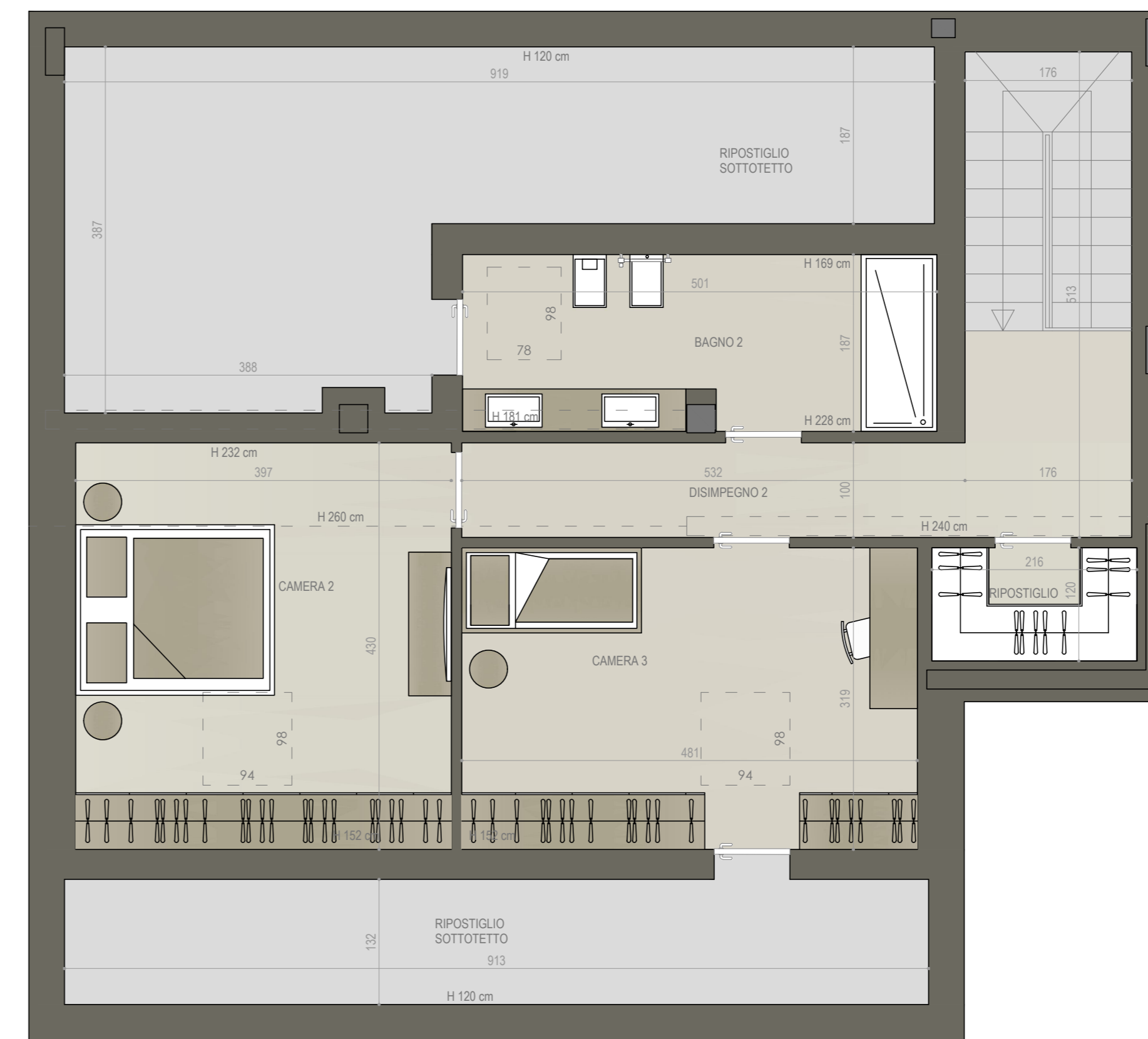
PIANO INTERRATO



PIANO TERRA

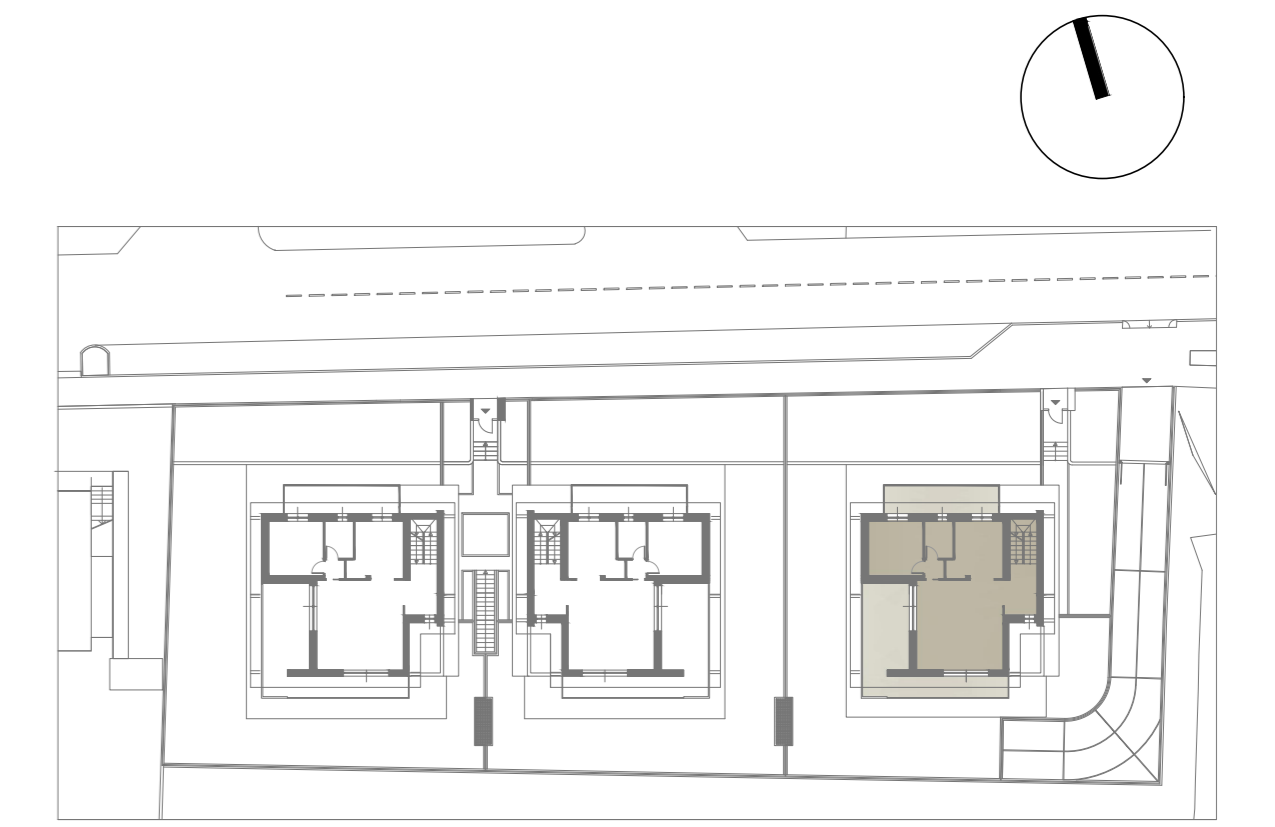


PIANO PRIMO



PIANO SOTTOTETTO AGIBILE

LOCALE	S.U. mq		
Ingresso 1	8,20 mq	Ripostiglio	2,60 mq
Ingresso 2	7,16 mq	Bagno 2	9,37 mq
Soggiorno	34,50 mq	Camera 2	17,07 mq
Cucina	11,97 mq	Camera 3	15,24 mq
Disimpegno 1	2,35 mq	Sottotetto ripostiglio	36,80 mq
Bagno 1	4,29 mq	Disimpegno 3	6,00 mq
Camera 1	13,10 mq	Locale multiuso	13,60 mq
Terrazzo 1	32,19 mq	Cantina	7,70 mq
Terrazzo 2	14,07 mq	Garage	37,07 mq
Disimpegno 2	9,15 mq		



FABRICA

REAL ESTATE

RESIDENZA BARBARA - VIA PRESOLANA - BERGAMO (BG)
APPARTAMENTO C2 | PIANO PRIMO | SCALA 1:50

