

B4 |Piano Primo|



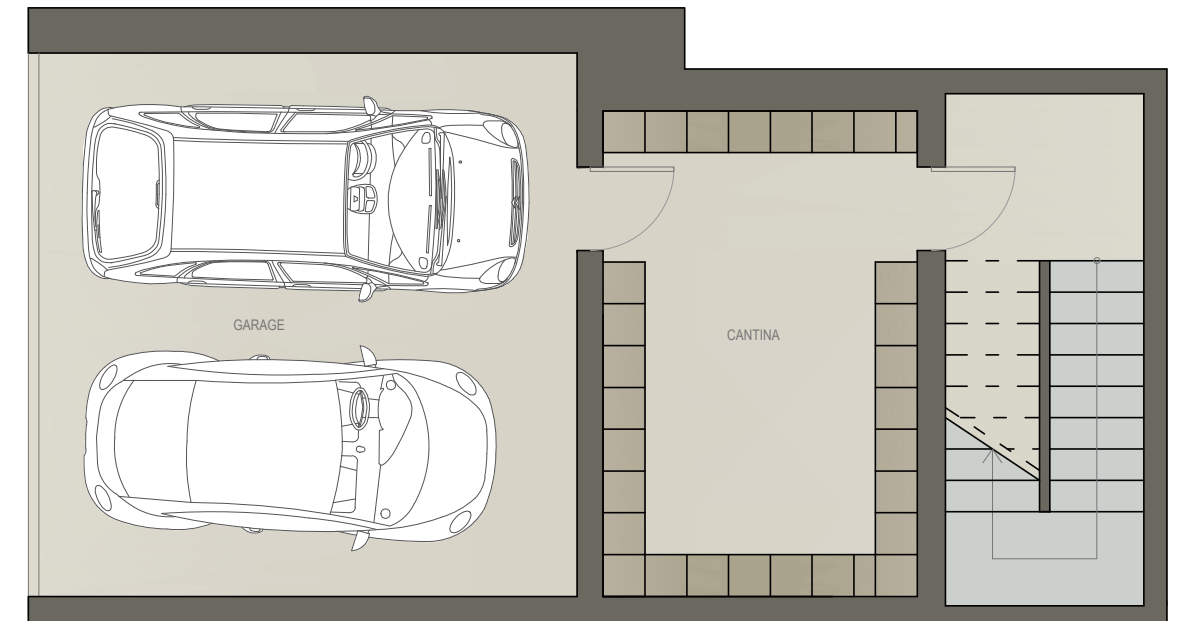
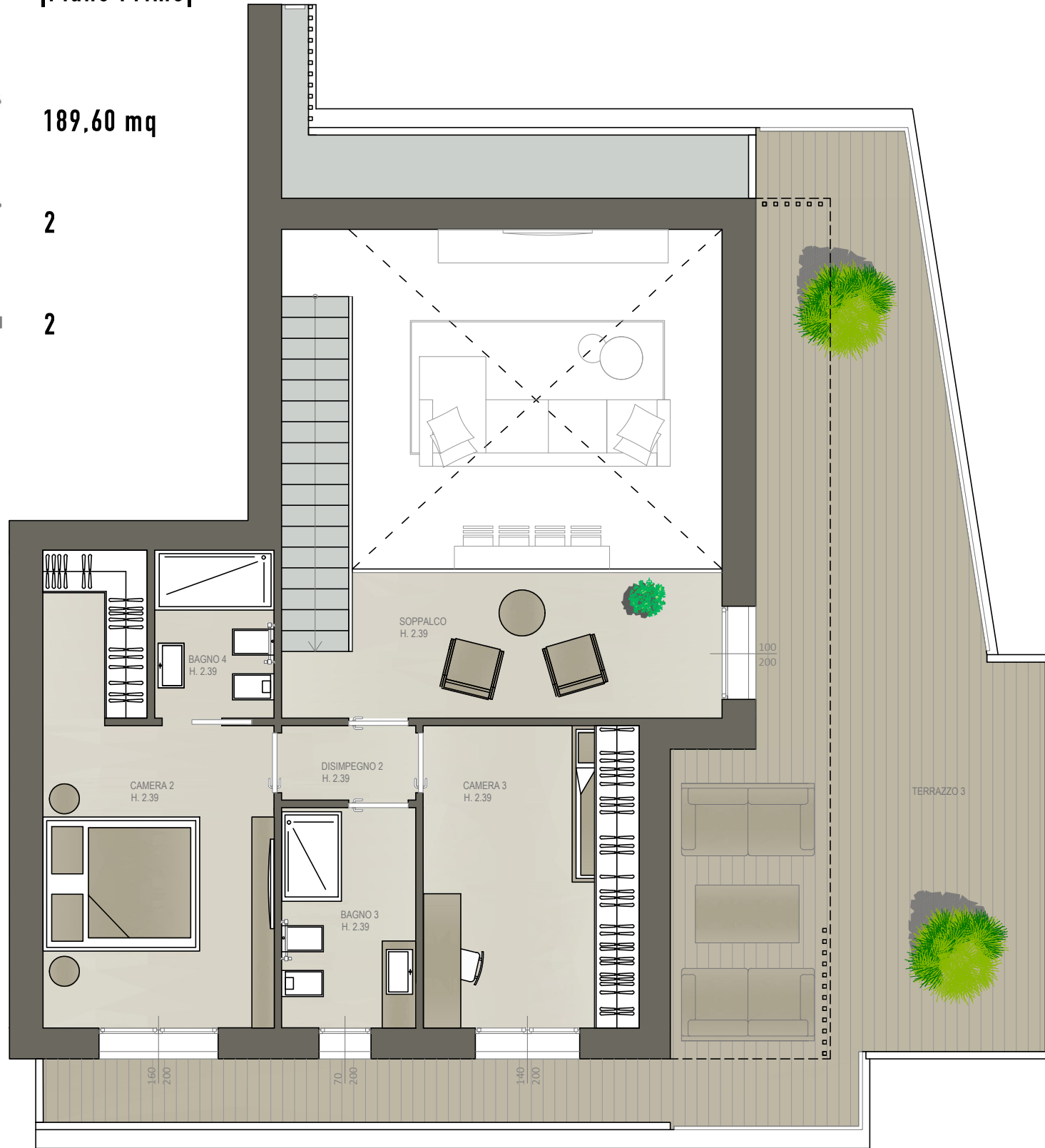
189,60 mq



2

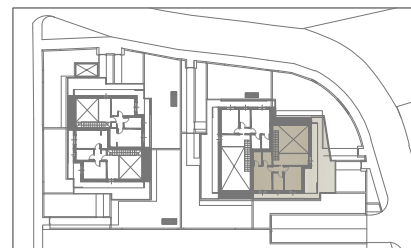


2



|Piano Sottotetto |

|Piano Interrato|



B4 |Piano Primo|



189,60 mq



2



2



|Piano Primo |

| LOCALE | S.U. mq | LOCALE | S.U. mq | LOCALE | S.U. mq |
|--------------|----------|--------------|----------|----------------|----------|
| Soggiorno | 38,65 mq | Camera 2 | 15,88 mq | Terrazza 3 | 55,24 mq |
| Cucina | 21,66 mq | Camera 3 | 11,77 mq | Pavimentazione | 5,76 mq |
| Disimpegno 1 | 1,80 mq | Disimpegno 2 | 1,80 mq | Giardino | 17,54 mq |
| Bagno 1 | 5,30 mq | Soppalco | 10,77 mq | Disimpegno 3 | 9,30 mq |
| Bagno 2 | 3,860 mq | Terrazza 1 | 29,42 mq | Cantina | 13,97 mq |
| Camera 1 | 15,61 mq | Terrazza 2 | 15,18 mq | Garage | 27,30 mq |

